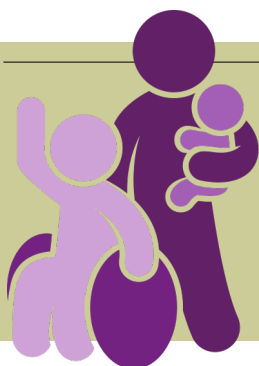


2018 – Issue 1

January-February-March



Let's Talk...

The Newsletter of the Ashland County Board of Developmental Disabilities

- This is the first issue of what will be a quarterly newsletter.
- Available in print or on the ACBDD website www.ashlandcbdd.org
- A reminder that school delay/closing info can be found on the following:
WNCO FM 101.3 or .com
WMFD FM 106.1 or .com
WKYC-TV 3
News Channel 5
Fox 8
ACBDD website

Keeping in Touch

We all lead busy lives and having the time to catch up with friends and family too often takes a backseat to other things. The same holds true for organizations. It is easy to get wrapped up in the day-to-day job of providing services and not take the time to talk with those who matter most.

We hope to do a better job of sharing and explaining. That is the intent of this newsletter. It is important to communicate with our stakeholders the many things we do as an organization. Sometimes we might share a story that will make you smile or relish in an individu-



al's steps toward a greater goal. We should celebrate those successes, big and small. We hope that you

find the information that we provide to be helpful. Please let us know your thoughts. This newsletter is for you.

Inside this issue:

Provider in the Spotlight The Link	2
What is a Waiver?	2
Staff Profiles	3
ACBDD Financial Facts	3
The Superintendent Speaks	3
By the way...	4

Dale-Roy School

The Dale-Roy Preschool and School have had a productive and fun fall. As always, we are busy focusing on academics, independent living skills, vocational skills, communication skills, and gross/fine motor skills! We have had several amazing opportunities this fall to learn and expand our experiences in the community. The Preschool and Primary classes have had experienc-

es with Gorman Nature Center, Hershberger Farms, and Buehler's, to name a few. The Jr/Sr. classes have had the opportunity for experiences that include therapeutic horseback riding with Raemelon Therapeutic Equestrian Center, swimming at the Ashland YMCA, and creating art at Believe It Art Studio. The Early Intervention Program continues to serve infants and toddlers

throughout Ashland County. The EI team works closely with parents to help little ones learn through play in their natural setting. The Dale-Roy team strives to help each child reach their highest potential in order to become active and engaged community members.

- Shannon Lange
Director of Education



Provider In the Spotlight



• Ashland Chapter •

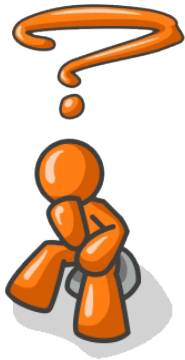
A program of SHC/The Arc of Medina County

The **ARC of Medina**, known in Ashland as **The Link**, operates its day program at 905 E. Main Street in Ashland. Since 2013, The Link has offered adult day program options and transportation to adults in Ashland County. The Link Day Program is a social, recreational and educational day program that provides

new and meaningful experiences to adult individuals with developmental disabilities with primary emphasis on the development of skills that facilitate community integration.

For more information contact Will McMahan at: wcmahan@shc-medina.org

What is a Waiver?



In the world of adult day program options, transportation, and residential supports, the discussion almost always includes the topic of a waiver. Some of you may have asked, "What is a waiver and how do you become waiver eligible?"

A waiver is a Medicaid funding stream that pays for a variety of services depending upon the type of waiver and the needs

of the person who is enrolled. There are three different types of waivers. The Individual Options, Level One, and Self-Empowered Life Funding waivers each have different spending limits and offer some different services. Assessments can determine your eligibility and if a waiver might help meet your needs. If a waiver opportunity is not immediately available,

you can request to be placed on the waiver waiting list. While on the waiting list, your immediate needs can be determined and assistance provided to help obtain alternative services.

For more information regarding waiver services and their availability, please contact our SSA department.

Upcoming Calendar

Jan	26	No Preschool	
Feb	16	Staff in-service	Dale-Roy School Closed
Feb	19	President's Day	ACBDD Closed
Feb	21	Provider Meeting	10:00 am (Location TBA)
Feb	23	No Preschool	
Mar	16	Parent Conferences	Dale-Roy School Closed
Mar	23	No Preschool	
Mar	30	Good Friday	ACBDD Closed



A Reminder that March is DD Awareness Month!



Staff Profiles

Angie Petelin - SSA



Although recently new to the ACBDD, Angie Petelin is not new to the DD field. Having spent over 12 years as an SSA in Summit and Portage counties, and another 6 years as a QDDP at the Hattie Larlham Center, Angie brings a wealth of experience with her.

One of her many strengths is her ability to personalize the individual's person centered plan. She is a graduate of Old Dominion University in Virginia with a BS in Human Services.

Angie and her husband have a 22 yr. old daughter who is also in the human services field. Angie is an avid runner and participates in 2-3 half marathons a year. She and her husband have 2 adopted rescue dogs and are also beekeepers of a hive of 40,000 bees! Please stop in and introduce yourself to Angie and welcome her to Ashland County!

Angie Hanna - Adaptive PE Instructor



A veteran teacher, Angie Hanna began her career at Dale-Roy School in 2001 as a substitute and began teaching Adaptive Physical Education full-time in 2006. Prior to that, Angie had extensive experience as an instructor and adult recreation coordi-

nator in Lucas County. She earned her B.Ed. and Masters in Special Education from the University of Toledo. Angie's special talent that she shares with her students is that she "makes movement fun!"

Angie and her husband John are the parents of 2 girls and 3 boys, the oldest age 26 and the youngest almost 16. Maggie, their Labrador retriever, rounds out the family. Angie enjoys reading and is also an accomplished flower gardener in her spare time. Thanks go to Angie for keeping our students active and engaged!

ACBDD Financial Facts

Projected Revenue for 2018:

1. Local levy revenue	\$4,083,000
2. Federal Revenue	968,115
3. State Revenue	785,323
4. Misc. Other	<u>84,900</u>
Total	\$5,933,638

"Local tax dollars are by far the greatest source of revenue that provides services to individuals with developmental disabilities in Ashland County."

*Kim Eichler
Director Business Operations*

The Superintendent Speaks

As we move into 2018, we would like to reflect on a year of transformation and growth at the Ashland County Board of Developmental Disabilities. Most importantly, we passed our renewal levy with overwhelming support from the Ashland County community. This community support has secured funding that will ensure the ACBDD's ability to continue our mission for all eligible individuals to

live, learn, work, and participate in the Ashland County community to the best of their abilities. We have also completed the federally mandated transition of our adult services program to D-R Services. This was a year-long process which was carefully planned to focus on a smooth transition with little to no impact on the individuals that we serve. This was only accomplished through the care-

ful collaboration of the administrative staff, D-R Services leadership, families, both Boards, and the entire SSA department. 2018 will also bring new challenges for the Ashland County Board of Developmental Disabilities. We will be preparing for another renewal levy which is crucial for us to continue forward to meet the needs of the individuals we serve. The ACBDD will be building a framework to

provide appropriate transition services for children age 14-21. We will also continue to focus our priorities on services which encourage community inclusion and integration. 2018 will be exciting and challenging but our focus will continue to be on providing the appropriate resources for all of the individuals we serve.

*- David Ashley
Superintendent*

The Ashland County Board of DD
1256 Center Street
Ashland, Ohio 44805
Phone: 419-289-0470

"The Ashland County Board of Developmental Disabilities (ACBDD) supports and partners with individuals with developmental disabilities and their families to explore and choose opportunities to live, learn, work, and play in the communities of Ashland County."

By the way...

Sometimes we meet our best friend at work or maybe at school. These ladies met their best friend at home! Jennifer Hawks and Ellen Price share a home together with a third lady. They have caregivers that provide homemaker and personal care services to help them live as independently as possible.

"We are sisters," says Jennifer. And like sisters, sometimes they can disagree. "Sometimes Ellen sings too loud," Jennifer adds. The ladies do however, clearly care for each other. "We are a family," says Ellen.

Medicaid waivers provide the majority of the funding that makes this important support available. The Ashland County BD of DD pays 40% in match dollars for the cost of these services. By leveraging local revenue along with Medicaid dollars, these funds provide two and a half times the amount of services.

SSAs work with each individual to develop a plan that assesses their needs and allocates available funding sources to meet these needs as much as possible. While helping to create a successful home setting can



Jennifer Hawks and Ellen Price

be challenging, these ladies seem to have paired up well.

"I like my home!" says

Ellen. "Me too!" agrees Jennifer. The smile on their faces seems to tell it all.